

NG9 1PF

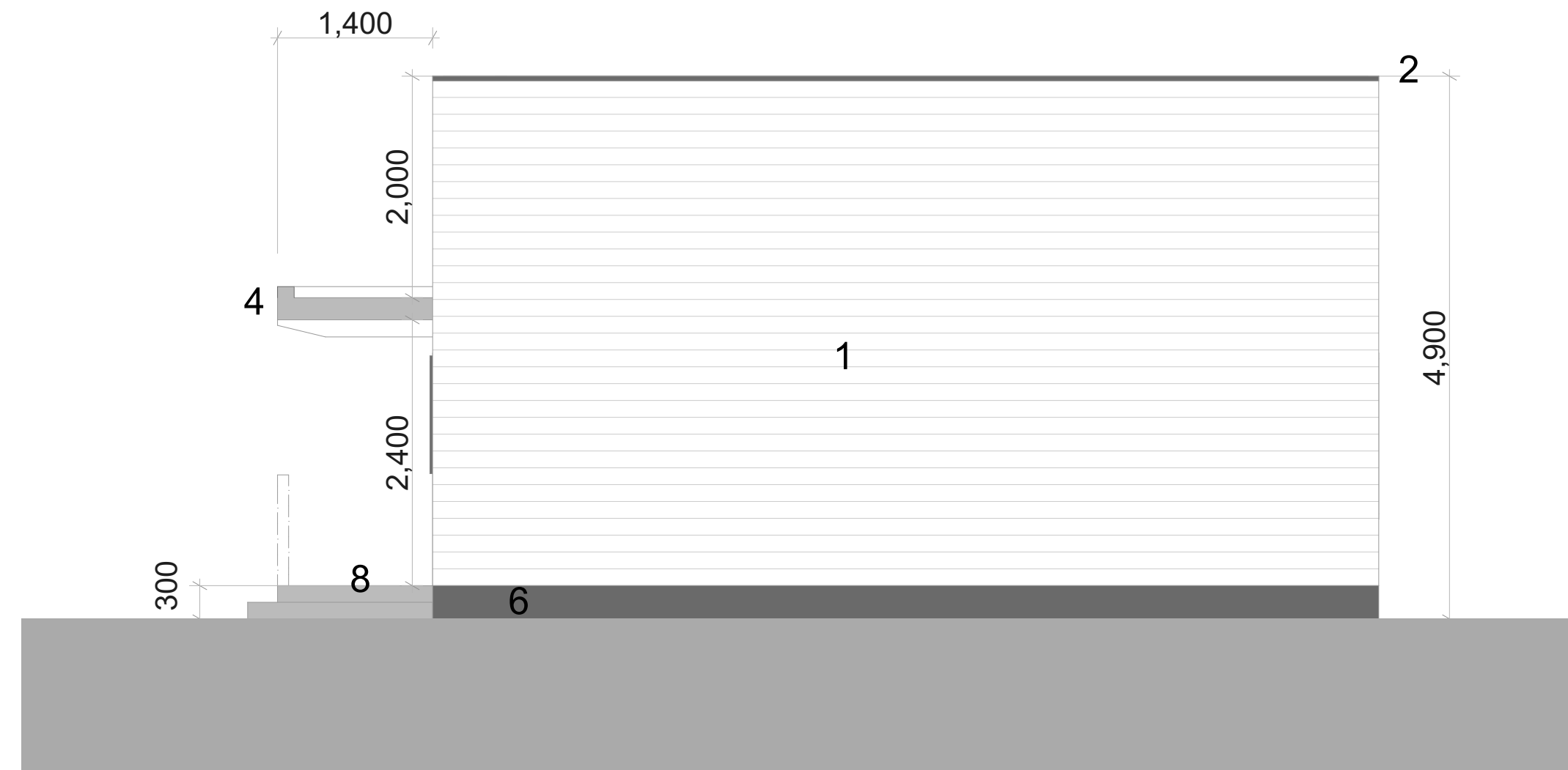
2nd Beeston Sea Scouts

PROPOSED ELEVATIONS

MATERIALS:

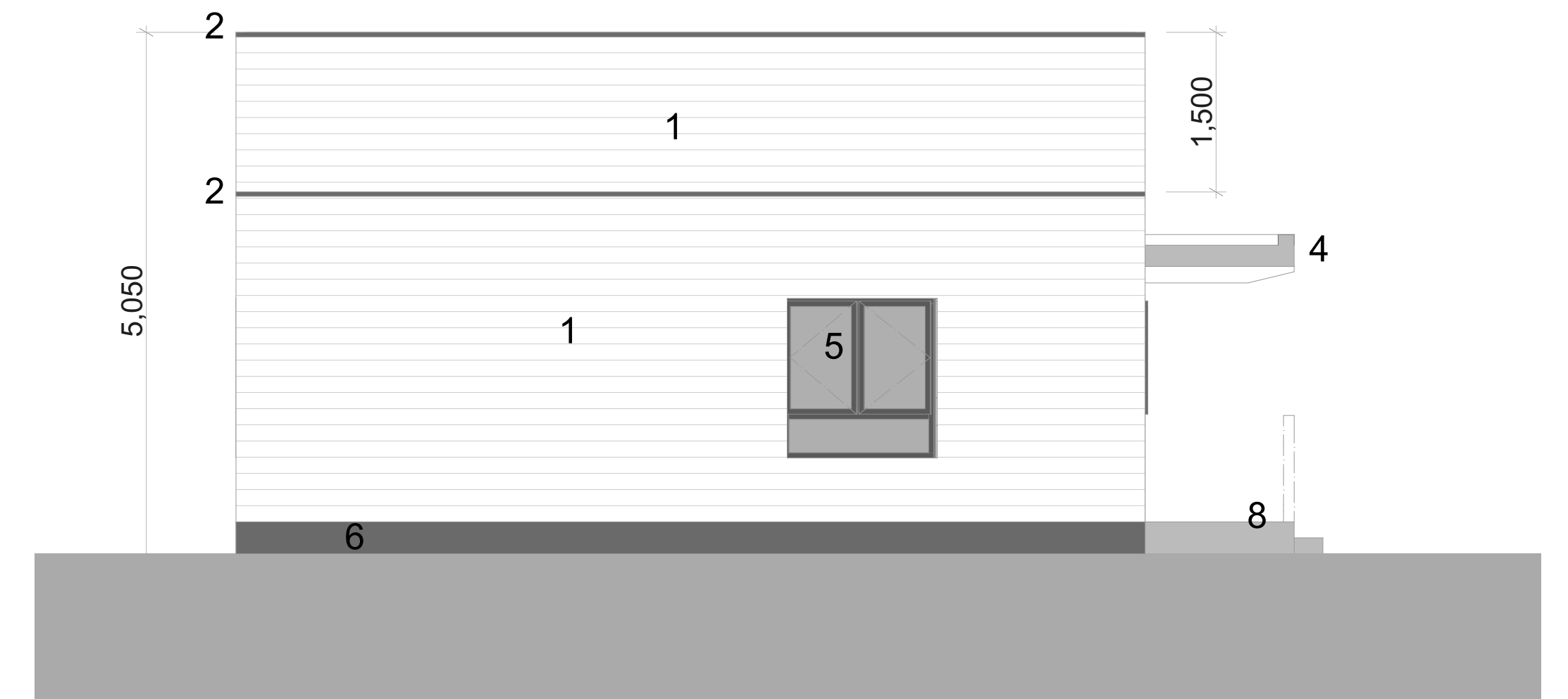
1. LIGHT MIST SMOOTH HARDIE PLANK FIBRE CEMENT CLADDING OR SIMILAR APPROVED
2. POLYESTER POWDER COATED ALUMINIUM PARAPET EDGE TRIM (COLOUR ANTHRACITE)
3. BLACK UPVC RAINWATER GOODS (HOPPERS AND CIRCULAR DOWNPIPES)
4. GLOSS WHITE PAINTED FASCIA TO SOUTH FACING TREATED TIMBER CANOPY
5. ORIGIN (OR SIMILAR APPROVED) ALUMINIUM DOORS+WINDOWS (COLOUR ANTHRACITE)
6. BLUE ENGINEERING BRICK BASE BELOW GROUND FLOOR LEVEL
7. LIGHT GREY COMPOSITE FIRE ESCAPE DOORS WITH PUSH BAR FITTINGS
8. TIMBER DECKING + RAMP

1:50 @ A1



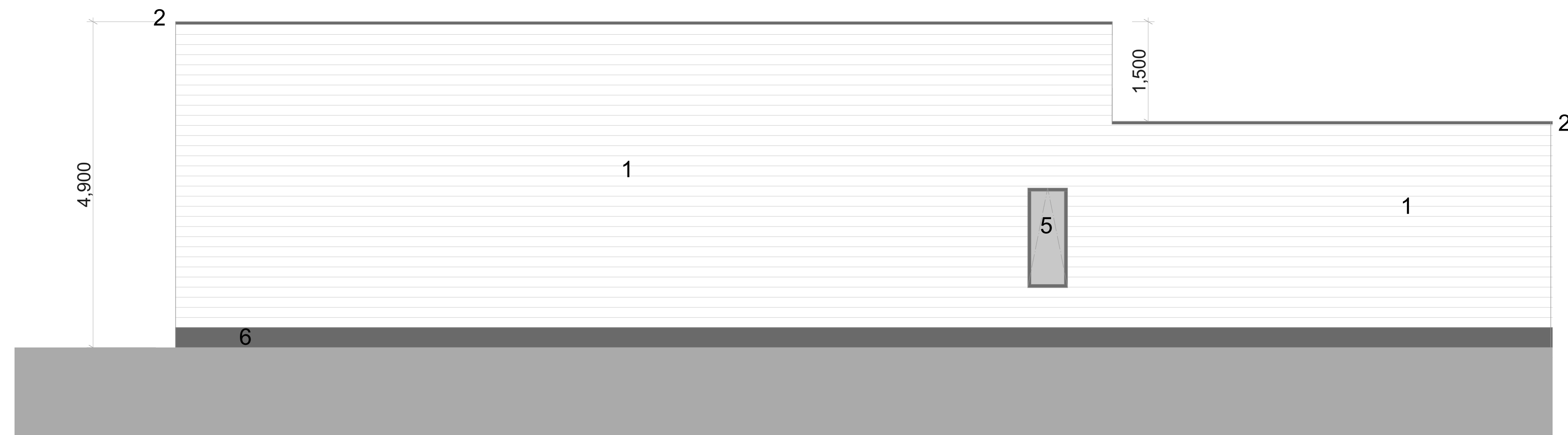
East Elevation

1:50



West Elevation

1:50



North Elevation

1:50



South Elevation

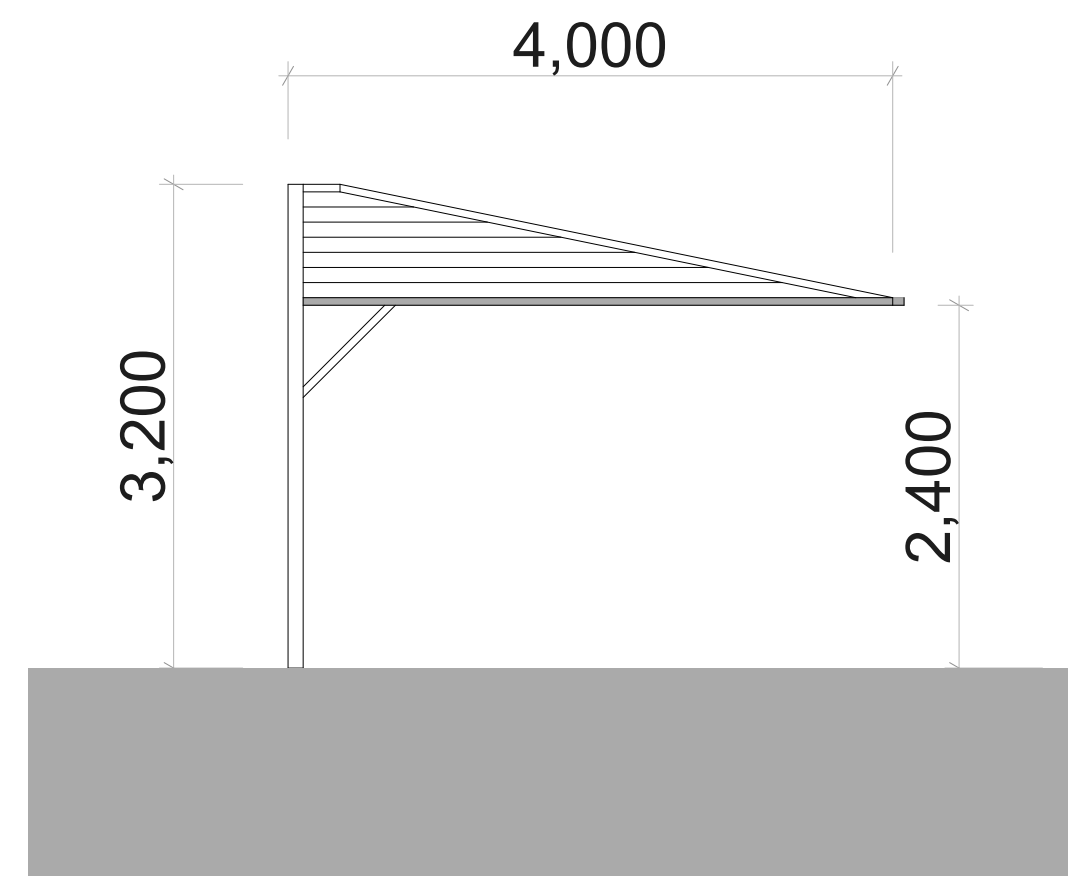
1:50

NG9 1PF

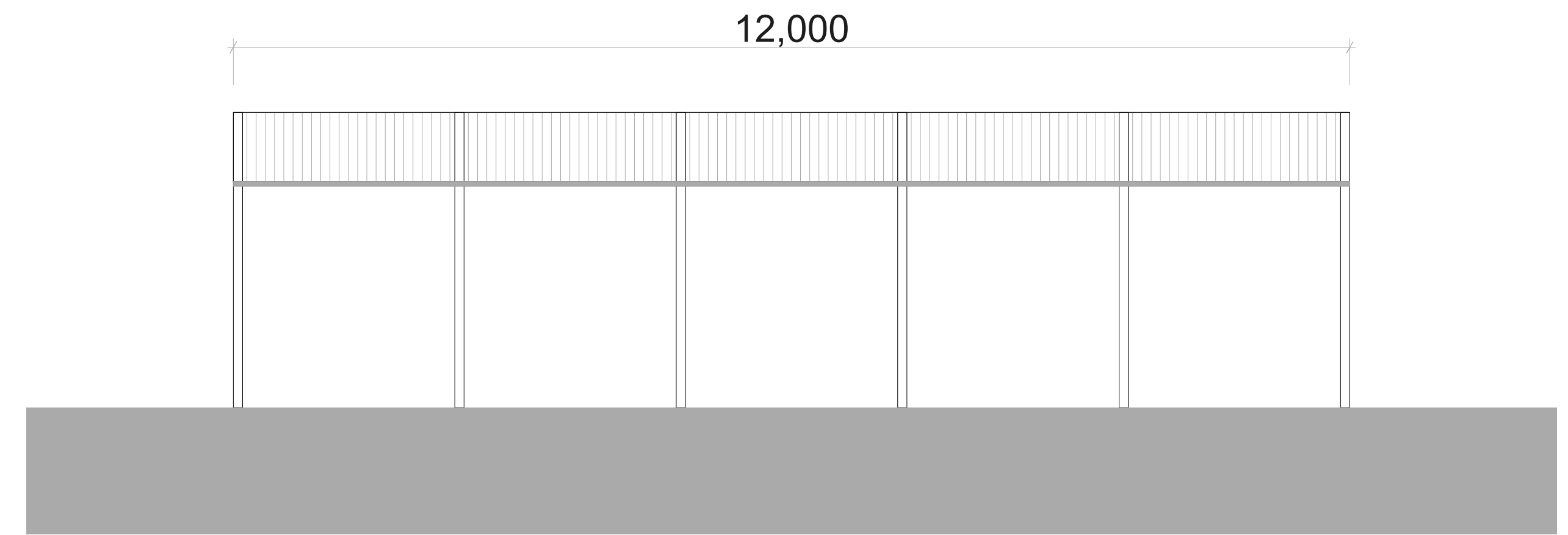
2nd Beeston
Sea Scouts

PROPOSED
POLYCARBONATE
CANOPY and
PORTACABIN
ELEVATIONS

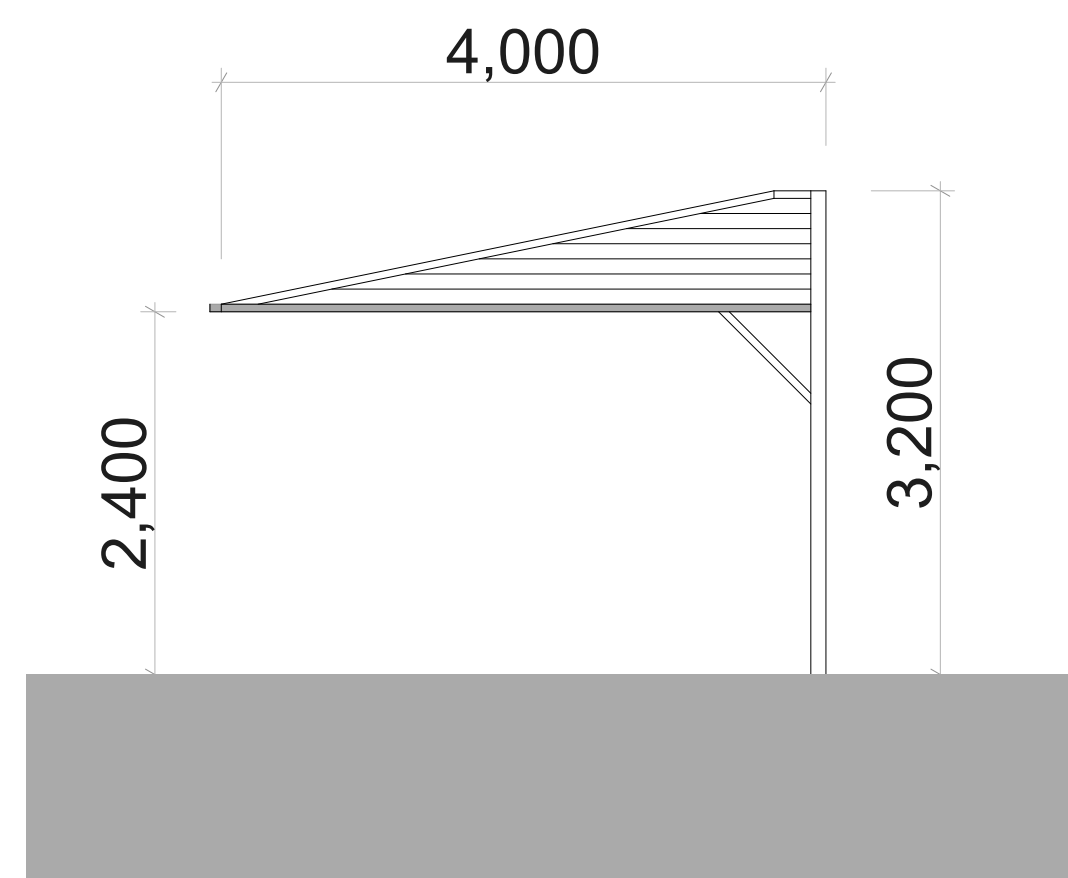
1:50 @ A1



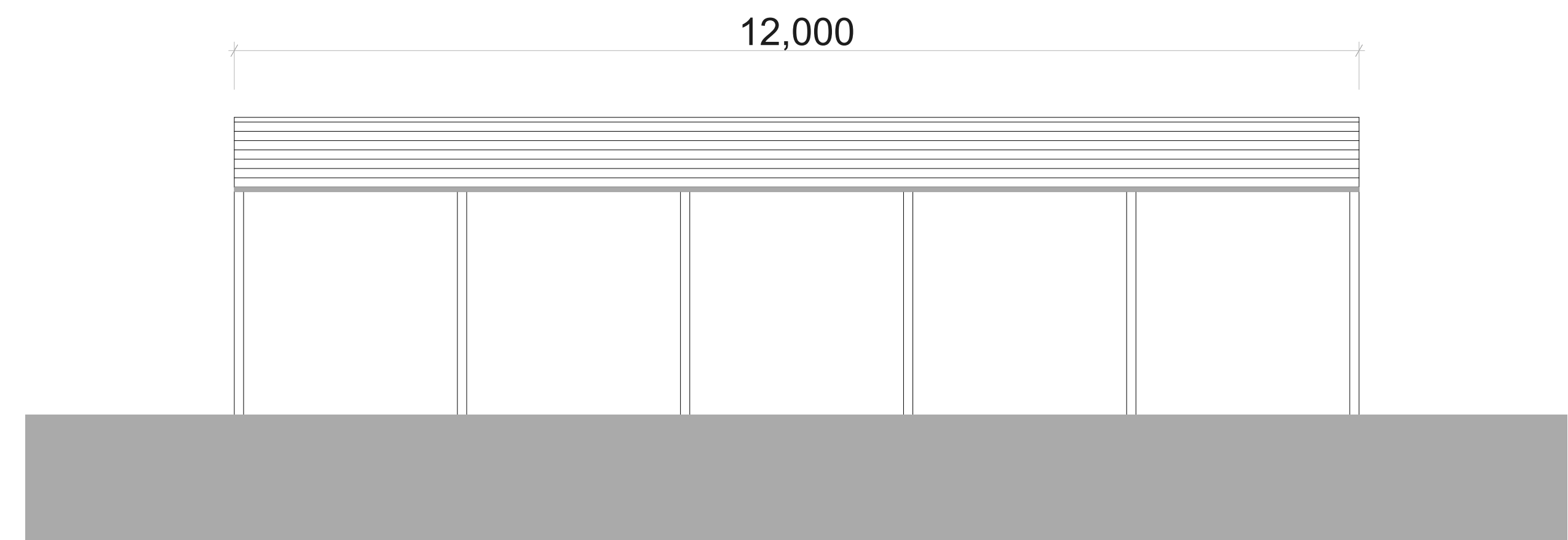
SIDE 1



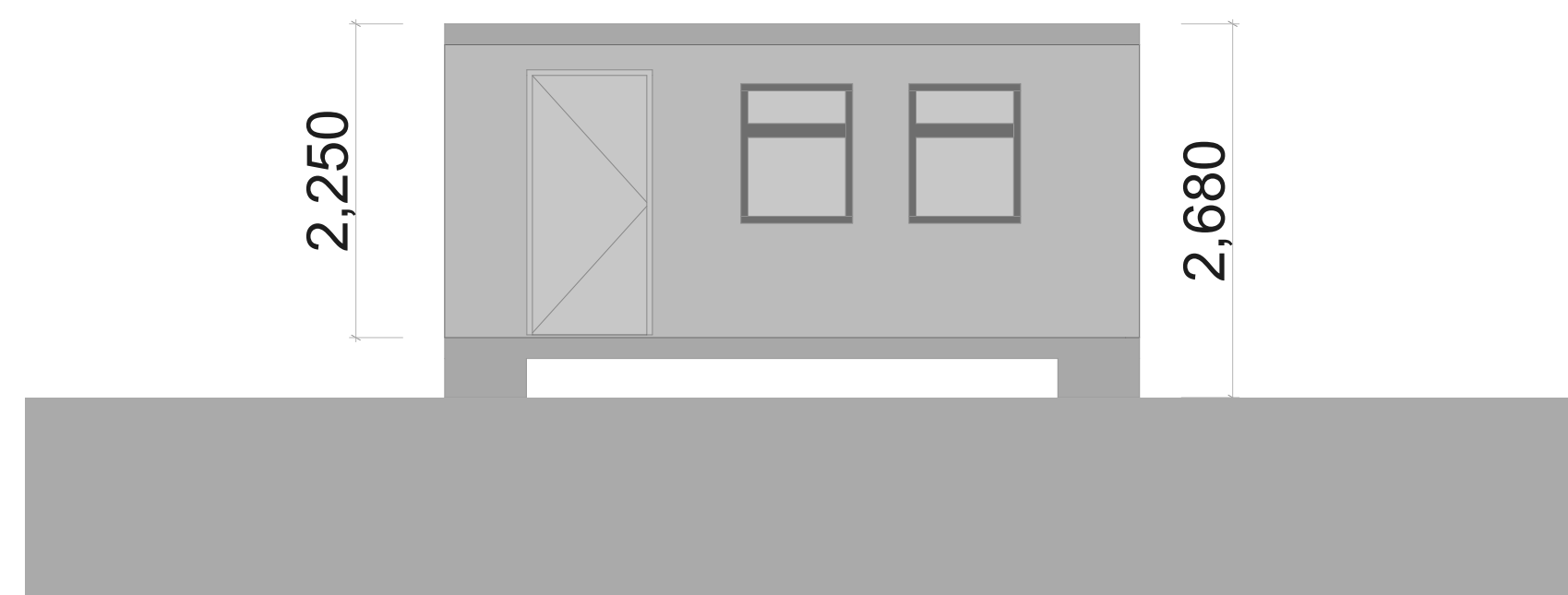
FRONT ELEVATION



SIDE 2



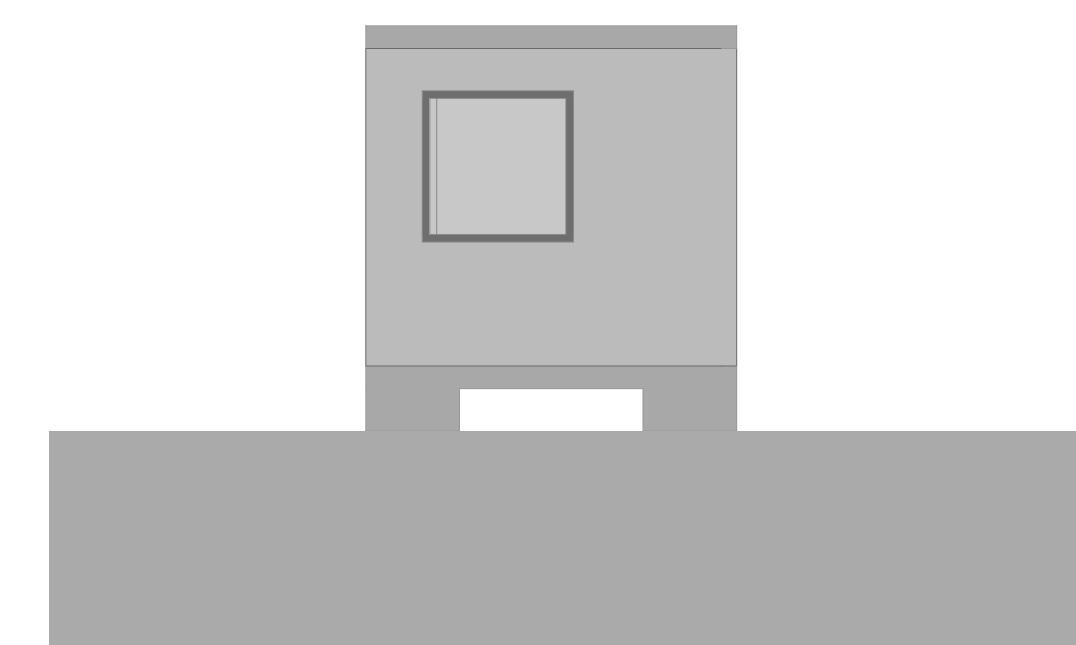
REAR ELEVATION



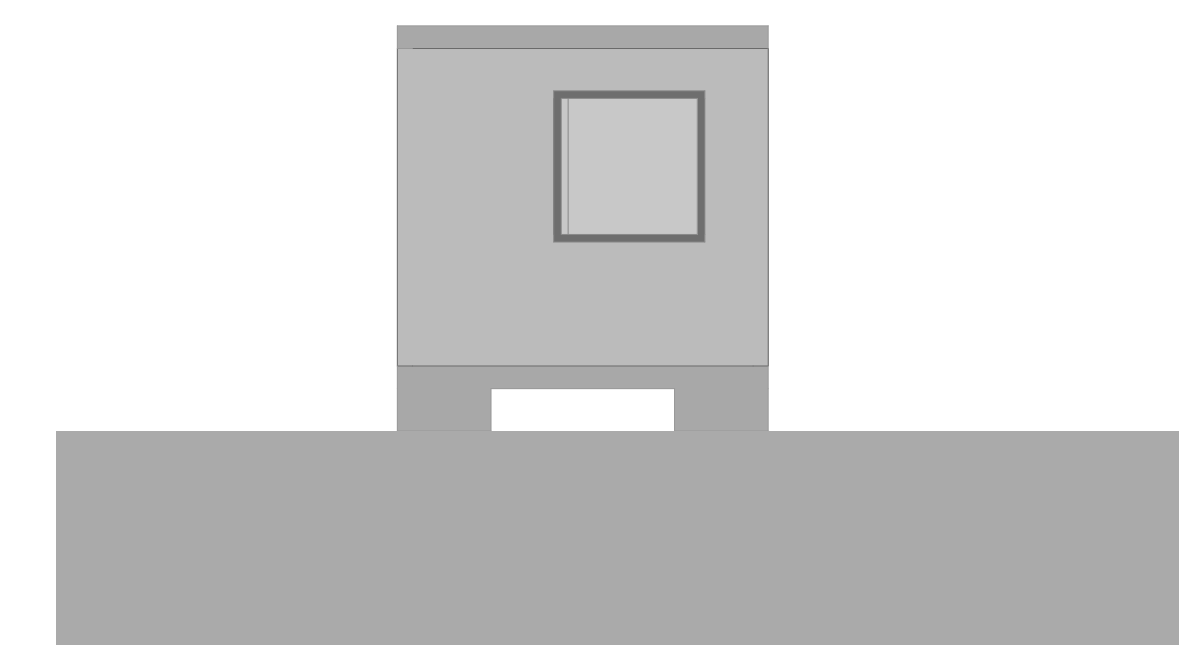
FRONT ELEVATION



REAR ELEVATION



SIDE ELEVATION 1



SIDE 2